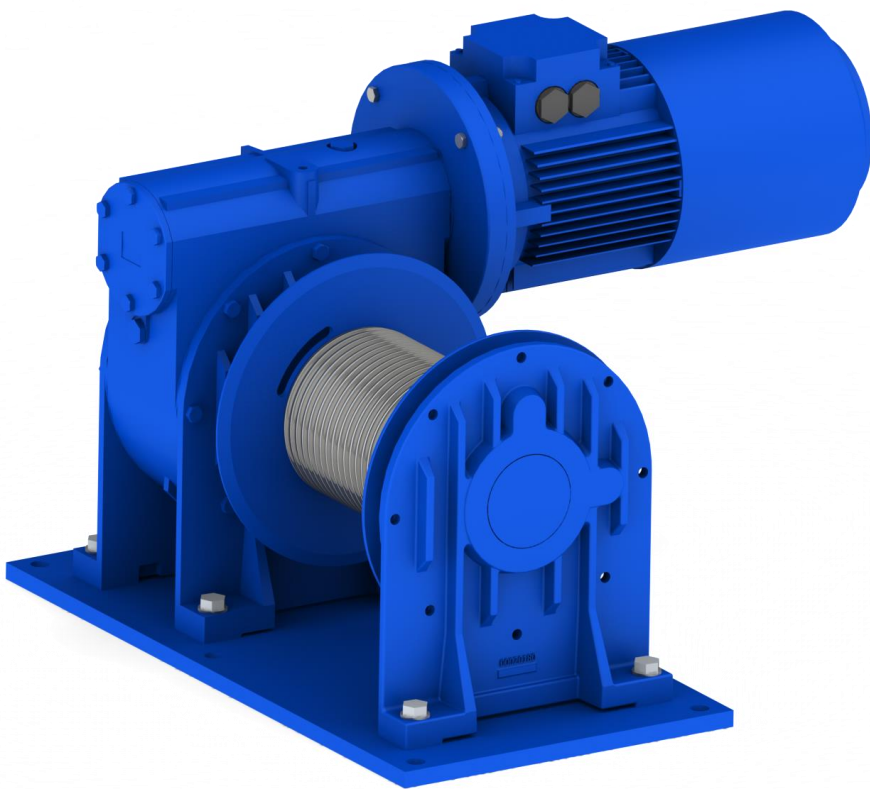


The series LM-EW H electric worm wheel winches



The LM-EW H electric worm wheel winch
A versatile worm wheel winch for lifting
applications



Canadaweg 8 | 4661 PZ Halsteren | The Netherlands
Phone: +31 (0)164-680097 | Fax: +31 (0)164-681971
e-mail: info@lemans-nederland.eu

www.lemans-nederland.nl

Standard build with high quality industrial worm wheel gearbox. Available in many varieties for lifting applications We are able to offer you many options as listed below. Below types are a small and general spectrum of what we can offer in these types of winches.

Please inform us your requirement.

Standard features

- High quality industrial worm wheel gearbox
- Grooved drum (from size 580H)
- Brake motor
- Voltage 400V 50Hz
- Protection IP55
- Oil filled
- 2-component paint system 150µm RAL 5002

Available options

- Galvanized drum guard €€
- Limit switch €€
- Protection IP56 / T.E.N.V. marine execution
- Atex motor
- Alternative voltages
- Various motor options
- Pressure roller
- Slack wire switch
- Wire rope
- Alternative dimensions
- Alternative speed / pulling force

Available controls

- D.O.L. Control Box IP65 with push buttons or pendant control with 5mtr cable acc. To NEN 1010
- Frequency inverter control
- brake resistor
- Wireless radio remote control

Technical specifications

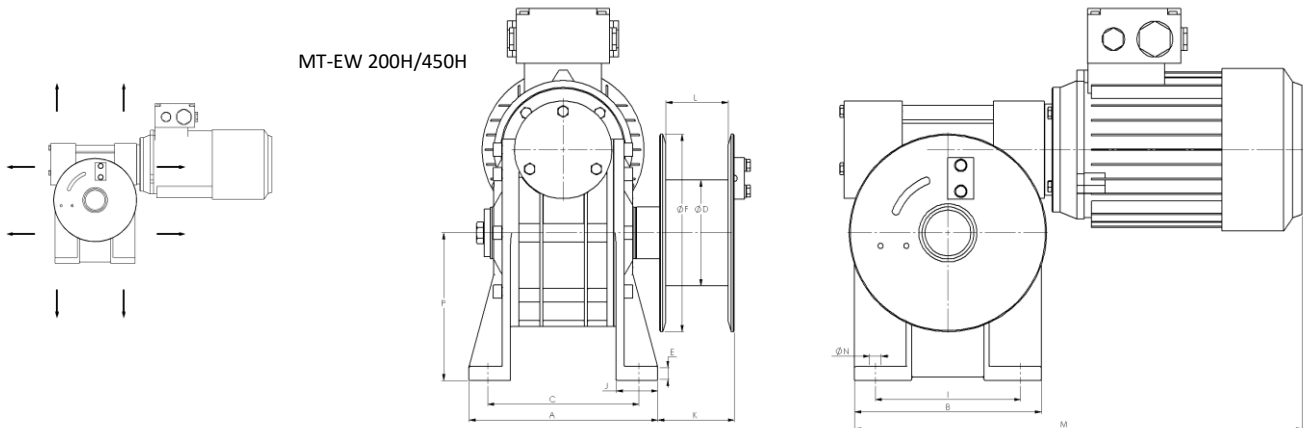
The Series LM-EW H specifications

| Winch type | W.L.L. Lift | Speed | | Recomm. rope diam. | Drum cap. 3 th layer | 400V S2 | Weight |
|-------------|-----------------------|-----------------------|-----------------------|--------------------|---------------------------------|---------|--------|
| | 3 st Layer | 1 st layer | 3 th Layer | | | | |
| LM-EW 200H | 200 kg | 6 mtr/min | 7 mtr/min | Ø5 mm | 13 mtr | 0,55 kW | 23 kg |
| LM-EW 450H | 450 kg | 7 mtr/min | 8,5 mtr/min | Ø6 mm | 13 mtr | 1,1 kW | 33kg |
| LM-EW 580H | 580 kg | 6 mtr/min | 7 mtr/min | Ø7 mm | 28 mtr | 1,1 kW | 89kg |
| LM-EW 800H | 800 kg | 7 mtr/min | 8,5 mtr/min | Ø8 mm | 28 mtr | 1,5 kW | 92kg |
| LM-EW 1050H | 1050 kg | 8 mtr/min | 10 mtr/min | Ø10 mm | 34 mtr | 3 kW | 139kg |
| LM-EW 1325H | 1325 kg | 9,5 mtr/min | 11,5 mtr/min | Ø11 mm | 47 mtr | 4 kW | 196kg |
| LM-EW 1700H | 1700 kg | 9,5 mtr/min | 11,8 mtr/min | Ø12 mm | 52 mtr | 5,5 kW | 318kg |

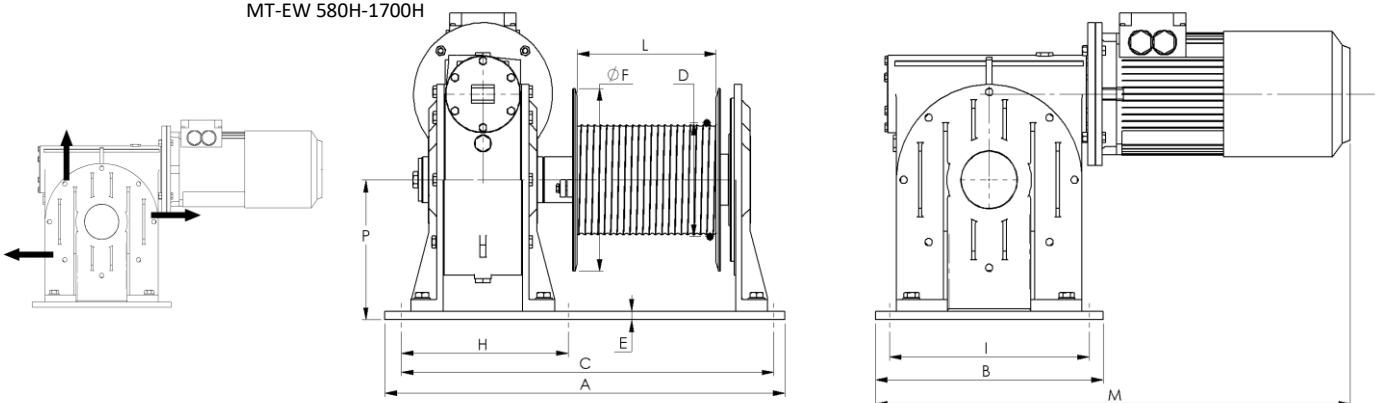
The Series LM-EW H dimensions (mm)

| Winch type | A | B | C | D (P.C.D.) | E | F | H | I | K | L | M | N | P |
|-------------|-----|-----|-------|------------|----|-----|-----|-----|-----|-----|-----|----|-----|
| LM-EW 200H | 141 | 156 | 115 | 102 | 12 | 190 | - | 120 | 83 | 60 | 456 | 11 | 115 |
| LM-EW 450H | 182 | 180 | 145,8 | 102 | 13 | 190 | - | 140 | 74 | 60 | 442 | 11 | 142 |
| LM-EW 580H | 540 | 325 | 500 | 124 | 10 | 250 | 260 | 325 | 108 | 150 | 621 | 13 | 182 |
| LM-EW 800H | 540 | 325 | 500 | 144 | 10 | 250 | 260 | 325 | 108 | 150 | 651 | 13 | 182 |
| LM-EW 1050H | 640 | 370 | 600 | 172 | 15 | 280 | 290 | 320 | 124 | 200 | 741 | 17 | 215 |
| LM-EW 1325H | 720 | 410 | 670 | 199 | 15 | 320 | 300 | 360 | 124 | 250 | 855 | 17 | 245 |
| LM-EW 1700H | 850 | 440 | 800 | 208 | 20 | 370 | 370 | 380 | 159 | 300 | 956 | 22 | 280 |

MT-EW 200H/450H



MT-EW 580H-1700H



Canadaweg 8 | 4661 PZ Halsteren | The Netherlands
 Phone: +31 (0)164-680097 | Fax: +31 (0)164-681971
 e-mail: info@lemans-nederland.eu

www.lemans-nederland.nl