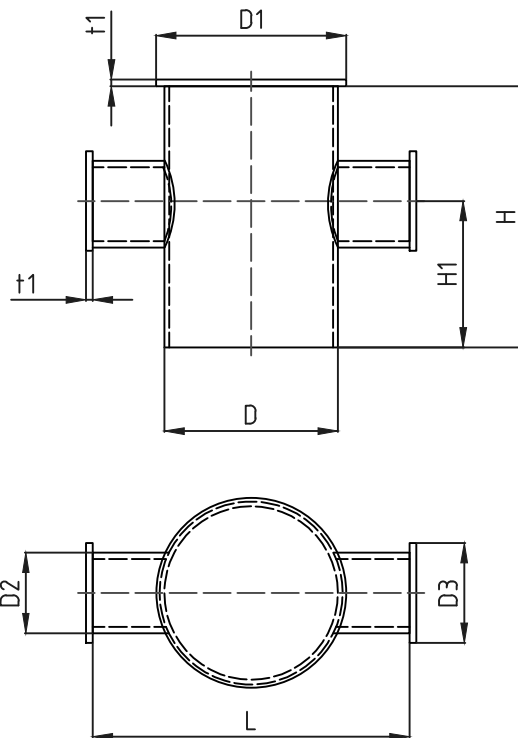


CRUCIFORM BOLLARDS



Cruciform Bollards designed acc. DIN82603
 Design safety factor: 5
 Material: S355J2G3
 Finish: sand blasted + 1 layer of shopprimer

| Type | Nominal pull (kN) | D | D1 | D2 | D3 | H | H1 | L | t1 | weight (Kg.) |
|-------|-------------------|-------|-----|-------|-----|-----|-----|-----|------|--------------|
| NG-01 | 10 | 114,3 | 125 | 54 | 67 | 175 | 99 | 210 | 6,5 | 5 |
| NG-02 | 20 | 127 | 130 | 60 | 75 | 190 | 108 | 230 | 6,5 | 6 |
| NG-03 | 30 | 139,7 | 153 | 63,5 | 79 | 210 | 118 | 255 | 8,5 | 9 |
| NG-05 | 50 | 219,1 | 240 | 101,6 | 126 | 330 | 185 | 400 | 8,5 | 22 |
| NG-08 | 80 | 273 | 300 | 133 | 166 | 410 | 230 | 495 | 10,5 | 44 |
| NG-12 | 120 | 323,4 | 355 | 152,4 | 190 | 485 | 275 | 585 | 10,5 | 81 |
| NG-20 | 200 | 406,4 | 445 | 193,7 | 242 | 610 | 345 | 735 | 15 | 138 |
| NG-32 | 320 | 457,2 | 500 | 219,1 | 273 | 690 | 390 | 830 | 17 | 206 |

Dimensions in mm, alternations may occur.



Lemans Nederland B.V.
 Canadaweg 8
 4661 PZ Halsteren
 The Netherlands

Tel.: +31 (0)164 680097
 Fax: +31 (0)164 681971
 E-mail: www.lemans-nederland.eu
 Website: www.lemans-nederland.nl